



WaveMANAGER™ Software Suite

Trouble-Free Management for Your Entire WaveLAN Network

WaveMANAGER Software Suite: Supporting Your WaveLAN Network

Today's businesses require constant communication and instant access to information — both in and away from the office. Wireless Local Area Networks (LANs) provide you with the mobility and flexibility you need — but you also have to manage the network that provides your communication requirements. We have a solution that is easy to use and understand. The Lucent Technologies WaveMANAGER Software Suite offers a complete set of management tools that help to enable you to manage, control, and monitor your enterprise-wide WaveLAN network from one location. Comprised of two distinct sets of software tools — WaveMANAGER/ACCESS POINT (AP) and WaveMANAGER/CLIENT — Lucent Technologies WaveMANAGER Software Suite can help you reduce the cost of managing your network.

Multiple Software Packages

To help ensure that you get the tools you need for managing your WaveLAN network, Lucent Technologies WaveMANAGER Software Suite consists of the following two software packages:

- **WaveMANAGER/AP Software** — WaveMANAGER/AP software is Windows® 95 or Windows NT®-based Simple Network Management Protocol (SNMP) compliant software that lets you centrally configure, manage, and remotely monitor your enterprise-wide WaveLAN network. From a location anywhere in the network, you can change the parameters of WavePOINT-II devices, diagnose the quality of links, and monitor the state of your wireless network's health. WaveMANAGER/AP software is also available in a DOS version.



- **WaveMANAGER/CLIENT for Windows** software — WaveMANAGER/CLIENT software is an easy-to-use tool that runs on Windows 95 or Windows NT platforms. With WaveMANAGER/CLIENT software, you can verify the quality of communication by checking the Radio Frequency (RF) link quality between your WaveLAN station and other wireless devices to which you are connected. You can also use WaveMANAGER/CLIENT software to verify building coverage, identify coverage patterns, select alternate frequencies, locate and tune around RF interference, and customize network access security. WaveMANAGER/CLIENT software is also available as a set of DOS-based tools.

Key Advantages

- User-friendly configuration, management, and monitoring of the WaveLAN network
- Centralized management for enterprise-wide, wireless networks
- Reduced network management cost
- Real-time information on communication quality
- RF channel management
- Site survey tools to verify wireless coverage and link quality in the building

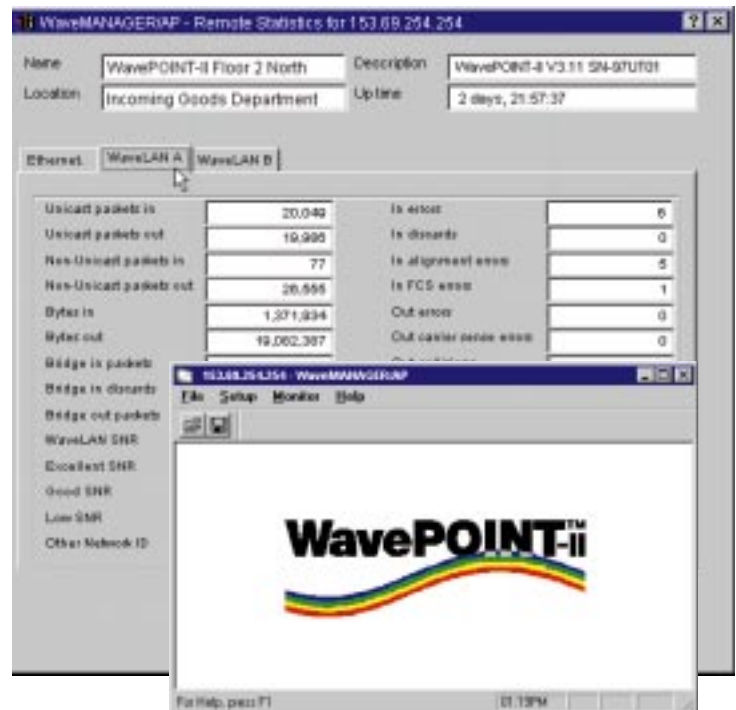
WaveMANAGER/AP Software: Providing Centralized Management for Your WaveLAN Network

The Windows 95 or NT-based, SNMP compliant, WaveMANAGER/AP software makes it easy to install and configure your WavePOINT-II Access Points. Lucent Technologies WaveMANAGER/AP software runs on either a station wired to the backbone, a wireless station, or a remote dial-up station, giving you the flexibility to manage your network from a site that is convenient for you. With WaveMANAGER/AP software you can control the WavePOINT-II parameters and monitor the status of any WavePOINT-II unit on the network, including remote statistics, interface statistics, and other system information. In addition, Lucent Technologies WaveMANAGER/AP software supports Remote Point-to-Point diagnostics letting you perform troubleshooting from a central location by testing the communication quality between a WavePOINT-II device and any connected wireless client. You can also manage and diagnose outdoor point-to-point links.

WaveMANAGER/AP Software Features At A Glance

- Centrally configure and manage the WavePOINT-II Access Point
- Monitor system information and remote statistics
- Perform Remote Point-to-Point diagnostics*
- Change WavePOINT-II parameters including:
 - Security key
 - Roaming enable/disable
 - Domain ID
 - Frequency channel management
 - IP parameters
 - Bridge parameters
 - SNMP parameters
 - Spanning Tree and broadcast parameters
 - Multicast delay
 - Access Control Table Manager

* Not supported in DOS software



WaveMANAGER/CLIENT Software: Helping You Optimize Your WaveLAN Network

Real-Time Information on Communication Quality

The **Communications Indicator** function of the WaveMANAGER/CLIENT software gives mobile users real-time, graphical information about the level of communication quality between their WaveLAN station and the nearest WavePOINT Access Point.

Radio Frequency Channel Management

Using the WaveMANAGER/CLIENT **Frequency Select** function, you can manage frequency channels by changing the operating frequency of a WaveLAN Network Interface Card (NIC). You can choose from up to eight different channels (in the 2.4 GHz frequency band). With Frequency Select, you can tune around RF disturbances and use additional frequencies for increased throughput. Similarly, you can use Lucent Technologies WaveMANAGER/AP software to change the frequency of a WavePOINT-II Access Point.

Extra Security Through Node Access Control

The **Access Control Table Manager** function of the WaveMANAGER/CLIENT software lets you restrict access to a WavePOINT cell, thereby securing your WaveLAN network from unauthorized access. Likewise, Lucent Technologies WaveMANAGER/AP software lets you change the Access Control Table for WavePOINT-II Access Points.

Building Coverage Optimization

In a multi-cell environment, the WaveMANAGER/CLIENT **Site Monitor** function is the ultimate tool to verify optimal placement of your WavePOINT Access Points. As you walk around the premises, the Site Monitor displays the communication quality with all available Access Points within the network environment (domain). With Lucent Technologies Site Monitor, it is easy to locate radio dead-spots or sources of interference, helping you to increase wireless performance by optimizing WavePOINT placement.

Link Quality Verification

The WaveMANAGER/CLIENT **Link Test Diagnostics** verify the communication path between your WaveLAN station and a neighborhood station or between your WaveLAN station and WavePOINT Access Point within one wireless cell. Lucent Technologies Link Test Diagnostics provide information about where to locate WavePOINT Access Points for optimal coverage. In addition, Link Test Diagnostics measure signal quality, signal-to-noise ratio, and the number of successfully received packets of both the local and remote device.

The image displays three overlapping windows from the WaveMANAGER/CLIENT software. The top window is the **Site Monitor**, which shows a list of Access Points with their communication quality indicated by colored bars (green, yellow, red). The middle window is the **WaveMANAGER/CLIENT** main interface, showing a **Communication Quality** indicator set to 'Good' and a **Network Connection** section displaying 'Wireless Infrastructure', 'Domain ID: 0001', and 'WavePOINT-II Floor 2 North'. The bottom window is the **Link Test (Point to Point)** window, which provides detailed diagnostic data for a connection between 'Your Station Info' (Name: Harry's Notebook, Address: 00-00-4C-C5-00-13) and 'Remote Station Info' (Name: WavePOINT-II Floor 2 North, Address: 08-00-0E-20-D1-4E). The Link Test window shows various metrics: Link Quality (Good), SNR (98%), Signal (99%), Noise (1%), Quality (100%), and Packet statistics (Local: 40 of 40 received, 0 lost; Remote: 20 of 20 received, 0 lost).

WaveMANAGER/CLIENT Features At A Glance

- Site Monitor
- Link Test Diagnostics
- Communications Indicator*
- Frequency Select
- Access Control Table Manager

* Not available as a DOS tool

Reduced Network Management Cost — Increased Performance

The Lucent Technologies WaveMANAGER Software Suite gives you the tools you need to manage and monitor every aspect of your enterprise-wide WaveLAN network. By allowing management from a central location, the WaveMANAGER Software Suite can help you reduce the cost of managing your network. At the same time, the tools contained in our WaveMANAGER Software Suite can help you improve the performance of every component of your WaveLAN network. The Lucent Technologies WaveMANAGER Software Suite gives you the tools for the performance you need — with the convenience you want.

Additional WaveLAN Network Information: Products, Specifications, and Ordering Information

WaveLAN Products Suit A Wide Range Of Applications

WaveLAN products offer a fast, reliable, cost-effective solution for wireless client access to the network in applications like these:

- Extension to wired Local Area Networks (LANs)
- Difficult-to-wire environments
- Frequently-changing environments
- Pre-installed, ready-to-use LANs
- LAN access for mobile computer users
- Temporary LANs for peak times or special projects
- Outdoor Antenna Links for high speed leased line replacement

Additional WaveLAN Products

- WaveLAN/ISA Network Interface Cards
- WavePOINT wireless access points
- WaveLAN/PCMCIA Network Interface Cards
- WaveLAN/External Antenna Module (EAM) for connecting external antennae to the WavePOINT-II Access Point

Technical Specifications

- **WaveMANAGER/AP Software** — runs on PCs using the Windows 95 platform, the Windows NT platform, or DOS 5.x and higher.
- **WaveMANAGER/CLIENT Software** — runs on PCs using the Windows 95 platform, the Windows NT platform, or is available as a set of separate DOS-based tools. The DOS-based tools are called WaveMONITOR, Point-to-Point Diagnostics, Access Control Table Manager, and Frequency Select.

Ordering Information

- **WaveMANAGER/AP Software** — is shipped with the WavePOINT-II Access Point.
- **WaveMANAGER/CLIENT Software** — is shipped with the WaveLAN/PCMCIA and the WaveLAN/ISA NICs.

For additional information about WaveLAN products and services, please contact your Lucent Technologies Sales Representative. Visit our web site at <http://www.wavelan.com> Or call us at 1-800-WaveLAN

WaveLAN is a registered trademark and WaveMANAGER and WavePOINT are trademarks of Lucent Technologies.

Windows and Windows NT are registered trademarks of Microsoft Corporation.

This document is for planning purposes only and is not intended to modify or supplement any Lucent Technologies specifications or warranties relating to these products or services.

Copyright © 1997 Lucent Technologies
All rights reserved
Printed in USA

Lucent Technologies
Marketing Communications
5462FS ND 9/97

Lucent Technologies
Bell Labs Innovations

